

# SAFETY BULLETIN



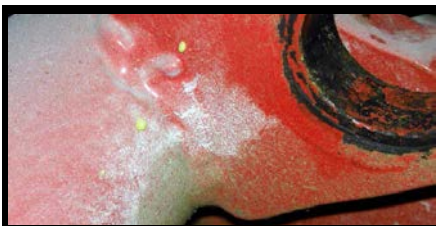
Section	Page
Contents	1
Introduction	2
Introduction	3
Yoke and Limit Switch Configuration	4
Checks to Perform	5
Inspection - Pre-Use	6
Inspection - Periodical	7

## POP UP SCISSOR PACK YOKE AND LIMIT SWITCH INSPECTION

This **safety bulletin** has been compiled to inform all owners and users of **Pop Up** machines from serial number 0001 to 2082 of an incident that occurred in which a failed weld caused the scissor pack yoke to become detached, this in turn led to the machine dropping whilst elevated. The incident occurred on a machine that had been in continuous service since 2005.

The inspection procedures outlined in this bulletin will enable a competent person to inspect a **Pop Up** machine and ascertain whether the attachment yoke exhibits signs such as corrosion and flaked paint around this component which could indicate a similar problem.

The image shows a scissor pack yoke in its normal condition with no visible signs of paint flake or corrosion.



Normal scissor pack yoke

The image below shows the failed component that exhibits a buildup of corrosion around the weld area.



Failed scissor pack yoke

The scissor pack stroke limiting switch, on the machine involved in this incident, was found to be out of adjustment and not stopping the scissor pack at the end of its stroke. This may have been an additional factor which weakened the weld on the scissor pack yoke and so inspection of this component has been included in the bulletin.

You will also note that the limit switch is present on all **Pop Up** machines and should therefore be inspected even if the serial number falls outside the range stated above.

The following pages outline which machines could be affected and why the later machines are not required to undergo certain parts of this extra inspection procedure. Later machines should, as with all the **Pop Up** machines, still undergo the statutory thorough examinations as outlined within the Lifting Operations and Lifting Equipment Regulations (LOLER) on a 6 monthly basis along with the periodical checks stated on the last page of this document.

We cannot stress enough the importance of carrying out both the pre-use checks and periodical checks on the **Pop Up** machines as this could have prevented this incident from happening.

In addition, **Pop Up Products** has compiled two **Essential Inspection Guidance** documents, Part 1 is intended for users of **Pop Up** machines and Part 2 is for Service Engineers, Inspectors & Technicians. Both documents stress the importance of regular inspection of the machines and also give examples of what to look for during such inspections. The guidance documents can be downloaded from [www.popupproducts.co.uk](http://www.popupproducts.co.uk)



[Original Pop Up  
how to use](#)



[Inspection Guide  
Users](#)



[Inspection Guide  
Service Engineers](#)



Scan this QR code to download our guides  
direct to your mobile or tablet device.

**Pop Up** machines have been manufactured since 2005. Early build machines (serial numbers 0001 to 2082) incorporated a different yoke arrangement to that fitted to later machines. The 'yoke' is the cross-bar where the hydraulic cylinder attaches to the scissor pack. Figure 1 shows a Type I yoke arrangement and Figure 2 shows a Type II yoke arrangement.

This Safety Bulletin has been prepared to ensure that adequate checks are undertaken in this area and to assess the condition and functionality of your machine.

Of particular importance in this area is the welded joint which secures the yoke '1' to the pivot plate '2'. There are two pivot plates, one either side of the cylinder. The pivot plates should be welded 'all round', i.e. on both sides and both ends. Regular checks of this area (and also other welds on the machine) ensure that any damage or deterioration is detected at an early stage.

Secondarily, this Safety Bulletin incorporates a check to determine the functionality of the scissor pack upper limit cut-out switch '3', which is shown in Figure 3.

The recommended inspection checks are split into two parts (CHECK 'A' & CHECK 'B') -

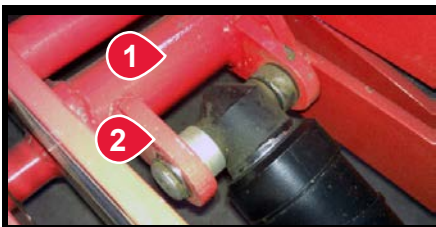


Fig. 1  
Type I yoke arrangement



Fig. 2  
Type II yoke arrangement



Fig. 3  
Upper limit cut-out switch

**CHECK 'A' should be undertaken on all machines with the Type I yoke arrangement, those with serial numbers 0001 up to and including serial number 2082.** (During year 2007 the design of the scissor pack was changed and Type II yoke arrangement was introduced. Those machines with a Type II yoke arrangement do not require CHECK 'A'.

**CHECK 'B' should be undertaken on all machines since the scissor pack upper limit cut-out switch is fitted regardless of serial number or age.**

Ensure you have the Operator's Safety and Maintenance Handbook for your machine readily available whilst undertaking the checks. If you are uncertain as to how to carry out either of these checks seek advice from your employer.

Both checks should be undertaken whilst standing at ground level, and using the controller on the extended cord to elevate and lower the machine. There is no need to enter the work platform when undertaking the checks.

#### CHECK 'A'

1. Elevate the machine sufficiently to apply both maintenance props '4' (see Figure 3).
2. Thoroughly clean around the area of the yoke and inspect all welds. Particular attention should be paid to –

- Ensure there is weld on all four sides of both pivot plates
- Visible cracking at the welded joint (the paint may appear to be cracked, for example)
- Paint loss which could lead to water ingress
- Signs of excessive corrosion around the welded joint (e.g. due to water ingress or moisture finding its way into the weld via flaked surface paint)

Rust stained cracks in the paint surface will require further investigation and the machine should be removed from service, isolated and **Pop Up Products** notified of the possible problem.

#### CHECK 'B'

1. Elevate the machine to its full height and ensure the scissor arm activates the limit switch '3', at which point the machine should cease elevating. If the machine continues to elevate and the scissor pack rollers are forced against the metal stop plates, then remove the machine from service, isolate it and inform **Pop Up Products** of the fault since further investigation, inspection and adjustment of the machine will be required.

#### Storage / Cleaning

Please remember that **Pop Up** machines have been designed for indoor use only. They must not be stored outdoors as this could lead to moisture ingress and the use of a cover is essential if the machines are being transported. The use of power or jet washers is also prohibited as it could also increase the likelihood of moisture ingress.

### 10 Point Pre-Use Checklist for Operators

1	Structure	check guardrails, scissor pack, connector pins, bolts and chassis for corrosion, cracks and general damage	✓
2	Platform	check platform for loose connections, damage, cracks etc	✓
3	Castors	check condition of tyres and castor chassis for damage or excessive wear	✓
4	Brakes	check operation and condition of manual brakes and check that auto brakes are working before entering the platform	✓
5	Oil Leaks	check for leaks on floor and underneath the chassis tray or main cylinder	✓
6	Battery Condition	check that the battery has sufficient charge and is in good condition	✓
7	Raise & Lower Functions	visually inspect all wiring and cabling for wear, cracks and damage and test the raise and lower function before entering the platform	✓
8	Emergency Stops	test the Emergency Stop on the control pendant and the Emergency Lowering system before entering the platform	✓
9	Emergency Lower	check that the scissor pack descent delay is functioning before entering the platform	✓
10	Safety Decals	ensure that all decals and plates are not damaged or obscured	✓

### Periodical maintenance and checks

	Daily / Pre-Use	Monthly	6 Monthly	12 Monthly
Inspect structure	✓	✓	✓	✓
Inspect platform	✓	✓	✓	✓
Check castors	✓	✓	✓	✓
Check manual rear brakes function	✓	✓	✓	✓
Check auto brakes function	✓	✓	✓	✓
Inspect for oil leaks	✓	✓	✓	✓
Check battery condition	✓	✓	✓	✓
Check raise/lower functions	✓	✓	✓	✓
Check emergency stop	✓	✓	✓	✓
Check emergency lower	✓	✓	✓	✓
Check stabilisers and lights function	✓	✓	✓	✓
Inspect training card and safety decals	✓	✓	✓	✓
Check hydraulic oil level		✓	✓	✓
Inspect limit switches		✓	✓	✓
Inspect wiring		✓	✓	✓
Check electrical connectors		✓	✓	✓
Lubricate roller guides		✓	✓	✓
Lubricate grease nipples		✓	✓	✓
Lubricate pivot pins			✓	✓
Lubricate castor mounts			✓	✓
Replace hydraulic oil				✓



**[popupproducts.co.uk](http://popupproducts.co.uk)**

**+44 (0)1244 833 933**

**[info@popupproducts.co.uk](mailto:info@popupproducts.co.uk)**